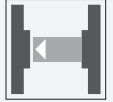




Thru-beam sensor emitter MD17/33/115-10M



- Emitter
- Compact, versatile housing
- 360° high visibility LEDs
- 10 m cable length

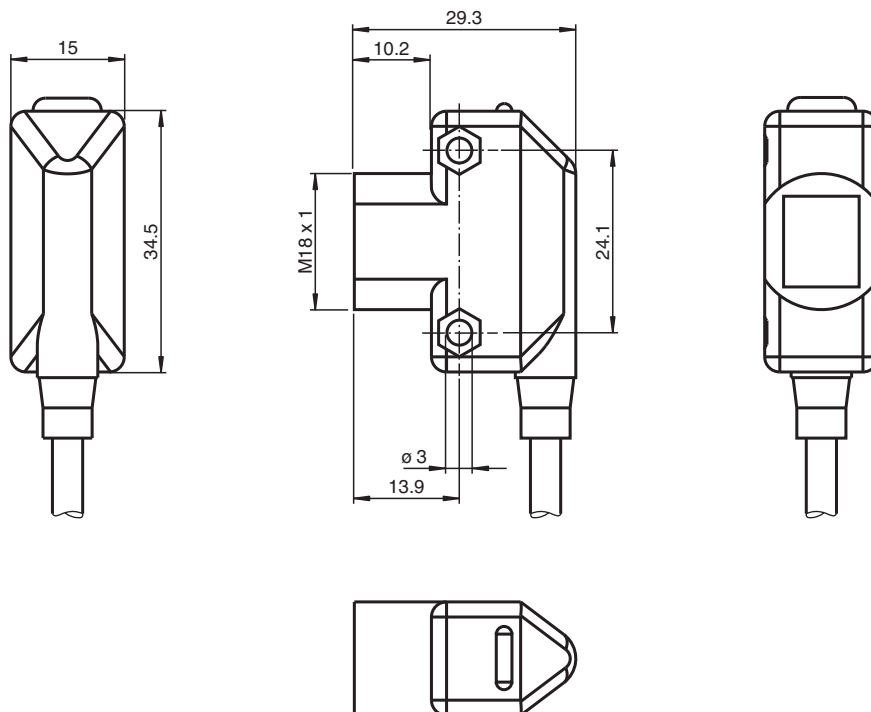
Thru-beam sensor transmitter, small design, infrared light, 20 m range, cable



Function

The ML17 sensor family offers diverse connection and installation options, which means that it can adapt to the most varied automation tasks. In addition to the usual fitting method using M4 screws, these sensors can also be installed by means of M18 threaded insert. All devices are equipped with a green Power On display and a yellow function display. These displays are arranged in such a way that they are clearly visible from different directions.

Dimensions



Technical Data

System components

Emitter	MD17/33/115-10M
Receiver	MV17/33/115/136-10M

General specifications

Effective detection range	0 ... 15 m
Threshold detection range	20 m
Reference target	receiver
Light source	IRED
Light type	Infrared LED
Ambient light limit	≤ 10000 Lux

Indicators/operating means

Operation indicator	LED green
---------------------	-----------

Electrical specifications

Operating voltage	U_B	10 ... 30 V DC , class 2
Ripple		max. 10 %
No-load supply current	I_0	< 25 mA
Time delay before availability	t_v	≤ 200 ms

Conformity

Product standard	EN 60947-5-2 IEC 60947-5-2
------------------	-------------------------------

Approvals and certificates

CE conformity	CE
UL approval	cULus
CCC approval	CCC approval / marking not required for products rated ≤36 V

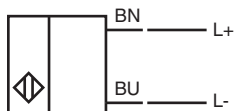
Ambient conditions

Ambient temperature	-20 ... 55 °C (-4 ... 131 °F)
Storage temperature	-20 ... 70 °C (-4 ... 158 °F)

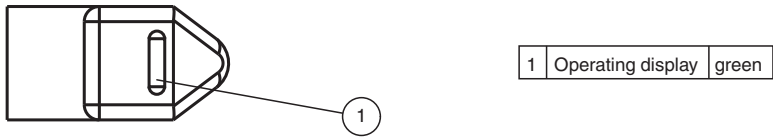
Mechanical specifications

Housing width	15 mm
Housing height	34.5 mm
Degree of protection	IP67
Connection	10 m fixed cable
Material	
Housing	ABS
Optical face	Acrylic
Mass	approx. 190 g

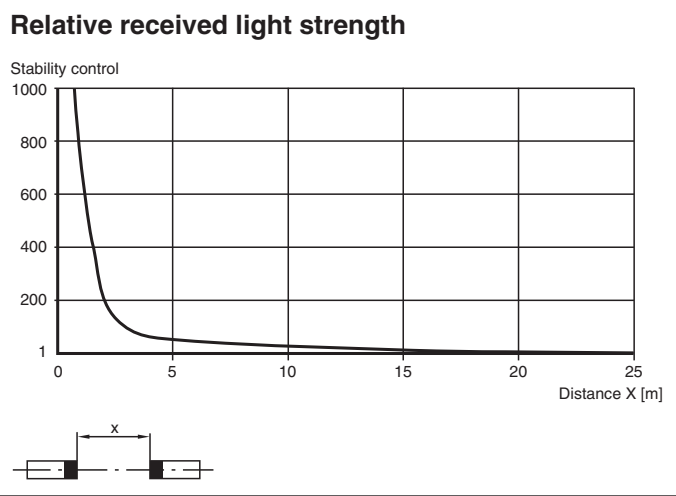
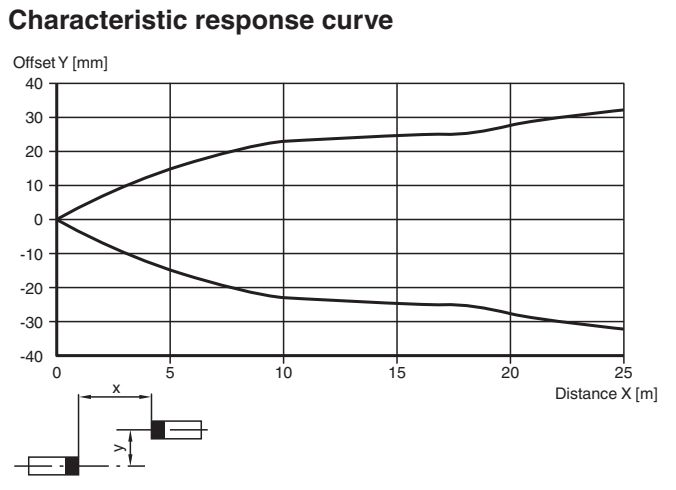
Connection




Indication





Characteristic Curve



Matching System Components

	MV17/33/115/136-10M	Thru-beam sensor receiver, small design, infrared, light-on/dark-on switching, push-pull output, cable
---	----------------------------	--

Accessories

	OMH-ML17	Mounting bracket
	OMH-ML17-1	Mounting bracket